



Launching the subject of;

“CHARACTER BUILDING” globally



Guiding and Motivating children towards righteousness through Character Education

ICE Publishers (Integrated Character Education) proudly presents a complete course of “Character Building” to schools. Integrated Character Education is a blend of moral, social and emotional education.

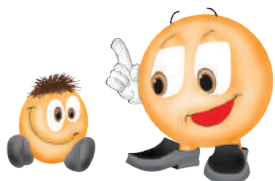
THE NEED FOR CHARACTER EDUCATION

The Programme has been initiated in the backdrop of conveying ethics to children pedagogically and effectively. An approach that is either neglected, inadequately applied or, let us just say, in great need of more attention in most Muslim schools.



THE UNIQUENESS of the subject

is the advanced pedagogical methods behind it. Numerous efforts in terms of smaller programmes have been made in the past by several Muslim countries. However, the methods applied therein are, according to the author’s research and seventeen years of experience, often limited to three main approaches, which are not providing the desired effect.



THE AIM of this curriculum

is to provide the modern Muslim World with a comprehensive ethical grooming programme that enlightens and boosts the values of school going children and to provide them with requisite moral, emotional and social skills. It is a complementary subject, taught alongside traditional school courses that is designed to educate children in the areas of self-awareness, empathy, self-control, moral reasoning, problem-solving, self-reflection, self-evaluation and other pedagogical methods of ethical grooming. The objective is to equip them with techniques and groom their characters in a way that can increase their chances to succeed in the test of life by becoming more enlightened, emphatic, God-conscious, God-fearing, and righteous human beings.



THE 3 MAIN APPROACHES THAT IS DOMINATING THE FIELD OF CHARACTER BUILDING IN MUSLIM COUNTRIES:

1. A few Western skill-training techniques inherited by some schools without proper concerns of context and culture. These small programmes do not integrate social, emotional and moral skills training. Nor are they comprehensive in nature which is needed for Character Education.
2. Another common method is through one-sided preaching. This usually implies disciplining the children by using the old-fashioned “raised finger approach,” where they are asked to consider terrifying consequences of their actions, particularly the daunting punishments of Hell and by highlighting the extraordinary rewards of Heaven.

Superstitious stories and invented characters are also used to frighten kids and make them abstain from certain unwanted actions.

Negative approaches of discipline rarely help to achieve the objectives of a character-building programme. Instead, there are greater chances that they will be leading them away from even the thought of “serious thinking” because of the unpleasant memories associated with this mode of teaching.

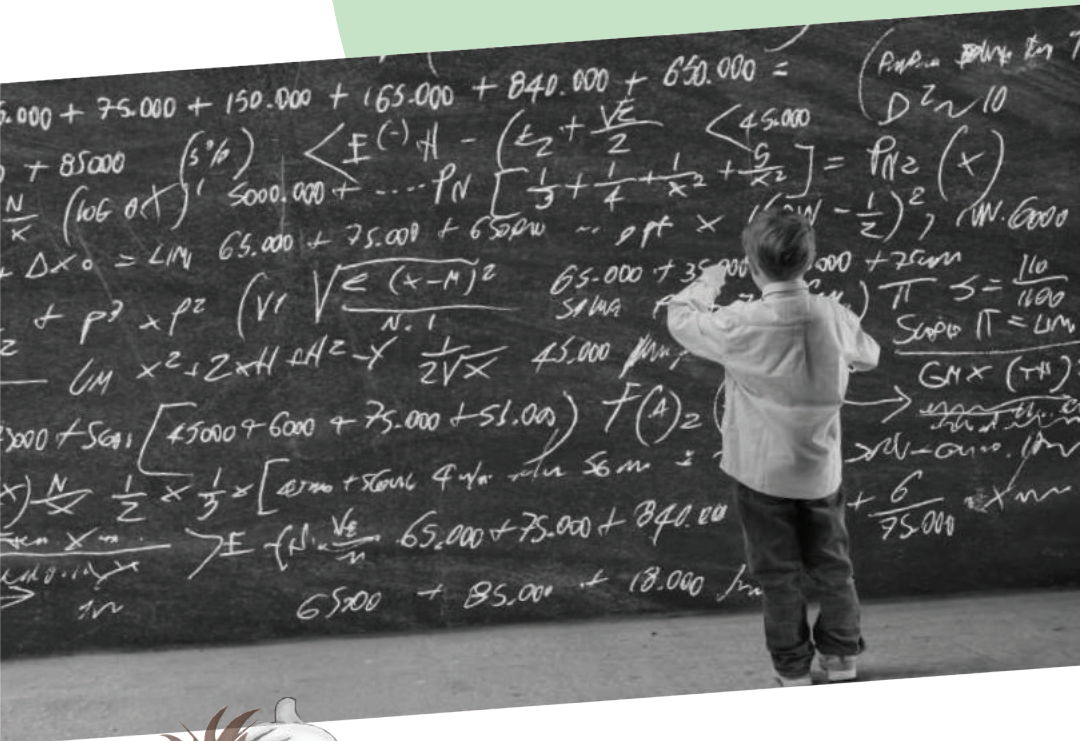


3. Moreover, the teaching material of many religious institutions is too often heavily reliant upon stories from “old times” and references to historical and religious events. The use of language is formal, and the style used to convey ethics based on one-sided preaching. This again will not automatically gain the attention of the children and make it hard for them to concentrate and stay involved. The reason is simply that such approaches alone are not suitable for children of the modern era as they can often be perceived as alien to their own reality in terms of their mentality, daily life routines, observations, and experiences.

EDUCATIONAL PSYCHOLOGY



is not a widely known concept in many developing countries. Being a rather new subject in these countries, the teachings are not always compatible with the child's cognitive development, nor are the methods of teaching attuned with the psychology of the child as a whole.



For example, pupils at primary level cannot comprehend abstract concepts such as Hell and Paradise fairly at this developmental stage. Instead, they need to be confronted with examples and issues that relate to their own understanding, experiences and reality. Moreover, the teaching in the classroom needs to be more interactive and involving as a general rule.

WHAT DIFFERENTIATES THE SUBJECT OF “CHARACTER BUILDING” FROM ISLAMIYÂT:

In contrast to syllabi of Islamiyât, which are specific A to Z guidelines of how to conduct one's life, this course communicates its teachings more indirectly emphasizing general universal values along with basic Muslim values. The Character Education is based on the reality of the modern world and child - in other words; *Duniya*/the worldly life. The aim is to influence them in a more casual, pedagogical and creative way so that the children can relate to the teachings easily and naturally.

Whereas Islamiyât must be considered as the real religious teaching of Dîn and *Duniya*, Character Building is to be considered as a supplementary subject, which is designed to assist in influencing and motivating the children towards righteousness from a different dimension and sense of reality. They are steered and guided to move from *Duniya* to Dîn and helped to make the link between the two. This approach is designed to reach out to the children by meeting them on a platform that they can identify with and relate to very easily.

Since children of the Twenty first Century, is whether we choose to be aware of it or not, generally greatly influenced by and indulged in the camouflaged glamour projected by the entertainment industry of the modern world, it is important to understand where they come from (their ground reality) and their developmental psychology if one is to gain their attention and win their hearts. For this, it is the belief of the author that we should take advantage of the positive means of educational psychology available to us if we want to see results.

This course tries to give a very practical execution strategy of how ethics can be imbibed creatively, accurately and efficiently in the sensitive and tender minds of children with every passing grade while they climb up the ladder of their school life.



EFFECTIVE WAYS TO HAVE THE CHILDREN ADOPT MORAL VALUES

require familiar, interesting, involving and motivating methods as positive reinforcement.

This Character Building curriculum, therefore, has been devised to teach morals based on various methods of educational psychology. Methods, which are grounded in pedagogical concerns and take into consideration the different levels and styles of learning.



THE THEORETICAL AND METHODOLOGICAL APPROACH

of this curriculum is eclectic. Different psychological, educational, theoretical and artistic ideas have been integrated into one approach.

The leading force of influence is a basic Islamic approach. The subject can however, easily be offered Non-Muslim pupils too as it emphasizes on basic universal values, especially during Primary schooling.

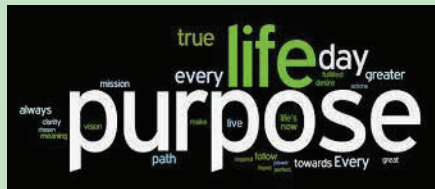


NEW INTEGRATION OF EDUCATIONAL APPROACH:



Approach

The approach of this course, should, ان شاء الله , be a turning point in the educational traditions of Pakistan and a contribution to ethics based on Islamic values all over the world. The Course is centred around; several types of stories, real life events, audio stories, role-playing, creative and personally involving activities and exercises. It involves questions, training forums of problem-solving and mediation, not to mention methods of positive reinforcement in line with the teaching of Islam. Skill training techniques and strategies, coaching and cueing, motivational self-reading, humour and jokes with a point, selected quotations and sayings, delicately placed Quranic verses and Hadiths - all have creatively been compounded in an attempt to involve, motivate and groom the minds of the children in accordance with their respective age level. A versatile course of Character Education, which aims to make better characters of our future generations.





For more information, please visit our website at:

www.ice-characterbuilding.com

Here you will find sample lessons, more aims and objectives, contact details and pricelist.

E-mail: Info@ice-characterbuilding.com